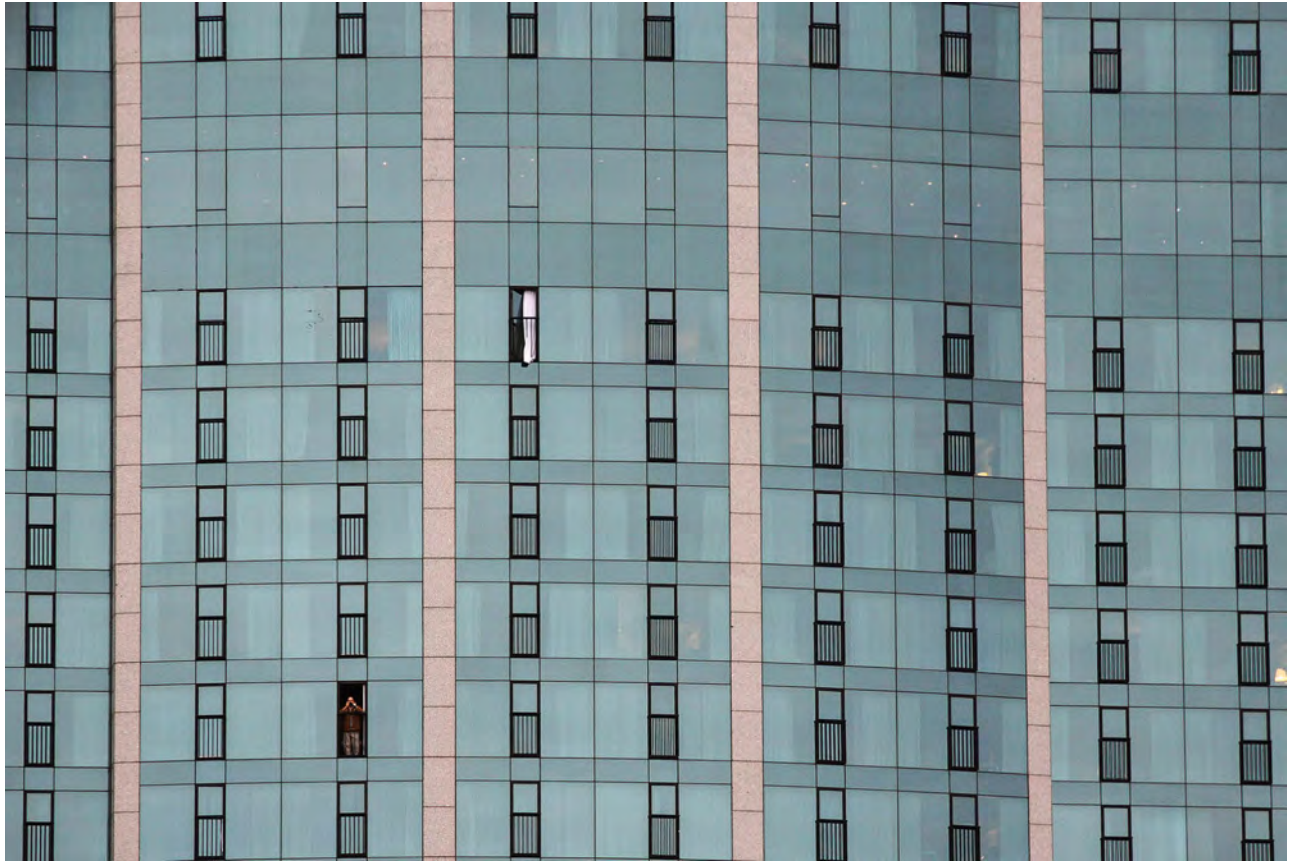


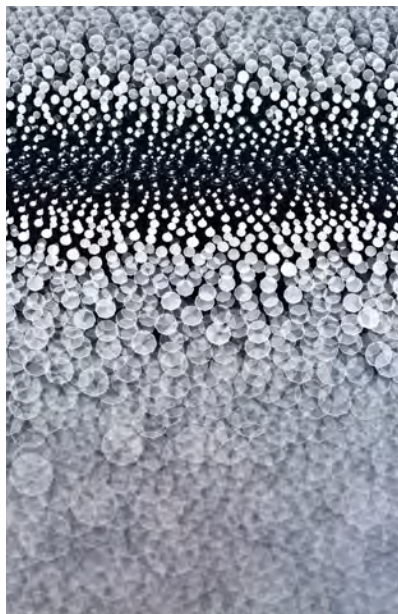
SHOWTIME



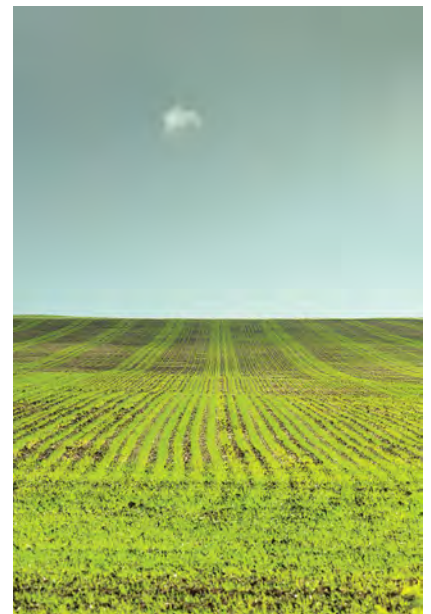
Winner: *Window Watcher*, Walter Howor, Rosemère, Que.



Frida-Inspired,
Michele Taras, Mono, Ont.



Essential To Life,
Ken Collett, Edmonton, Alta.



Little Cloud,
Charles W. McDonald, Edmonton, Alta.

PATTERNS



Urban Mountain Peaks, Sherry Galey, Almonte, Ont.



Circle Crossing, Maggie Sale, Guelph, Ont.



Leaning Line, William H. Vanden Born, Edmonton, Alta.



Life's Worth Getting Wet For, Kelly Gauthier, Toronto, Ont.

SHOWTIME WE INVITE OUR READERS TO PARTICIPATE IN THE SHOWTIME PHOTO CONTEST

REQUIREMENTS

Please send your entries (max. five images per participant per theme) to showtime@photolife.com following these guidelines:

- Image format accepted: JPEG only
- Image width: from 1800 to 4000 pixels (files must not exceed 3 MB)
- Send only one image per email
- Indicate the contest theme in the subject line
- In the message, provide your name, address, phone number and title of the image

The Showtime contest is open to Canadian residents only.



This issue's first place winner receives a **one-year** subscription to *Photo Life!*

THEMES	DEADLINE	PUBLICATION DATE
Summer Dreams	March 15, 2016	June/July 2016
Celebration	May 15, 2016	August/September 2016
Red	July 15, 2016	October/November 2016
Fruit	September 15, 2016	December/January 2017